

# FC-211/SU RF Data Module

## USER MANUAL



SHENZHEN FRIENDCOM TECHNOLOGY DEVELOPMENT CO. , LTD

Address: 2/F, Multifunction Building, Dongpeng Industrial Park,  
Wuhao Road, North Section of Hi-tech Park, Shenzhen 518057 China

Tel: +86-755-86026603 +86-755-29926100

Fax: +86-755-86026300

E-mail: [faq@friendcom.com](mailto:faq@friendcom.com)

Website: <http://www.friendcom.cn>

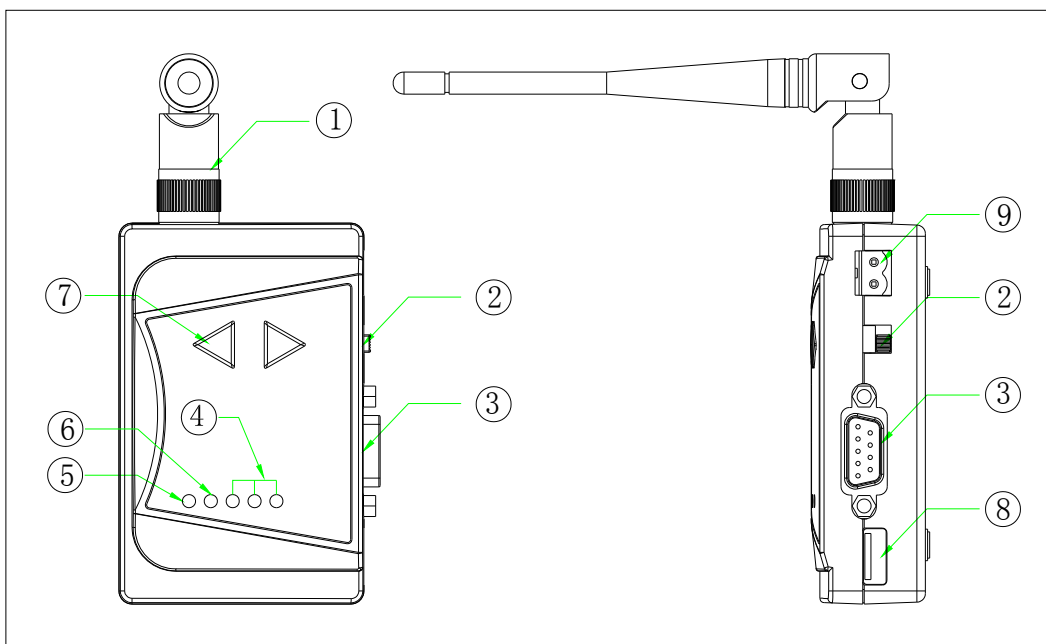
## TABLE OF CONTENTS

TABLE OF CONTENTS-----	1
PICTURES OF FC-211SU-----	2
INTERFACE AND FUCTION DESCRIPTION-----	2
HOW TO USE FC-211SU-----	3
TECHNICAL SPECIFICATION-----	3
CORRESPONDIN FREQUENCY OF CHANNEL 1—8-----	5

I. Picture of the FC-211/SU:



2. Interface and Function Description:



- ① ANT: Antenna Port
- ② Interface-selection Switch. If the switch is put to USB, the module is connected to computer via USB and the module can be powered by USB. If the switch is put to SERI, the module is connected to computer via RS-232 interface. The module will be powered by the external power(which is connected to ⑨).
- ③ RS-232: Standard RS-232 Interface(female)
- ④ CHANNEL Led: Channel Indicator, three LEDs' status will represent 1-8 channel, The corresponding LED status for each channel number is shown in the following table.

Channel No.	LED1	LED2	LED3
1	OFF	OFF	ON
2	OFF	ON	OFF
3	OFF	ON	ON
4	ON	OFF	OFF
5	ON	OFF	ON
6	ON	ON	OFF
7	ON	ON	ON
8	OFF	OFF	OFF

- ⑤ POWER Led: Power Indicator, the LED will be red while power-on.
- ⑥ TX/RX Led: TX/RX Indicator, while the module is in transmitting status, the LED will turn red, while the module is in receiving status, the LED will turn green.
- ⑦ Button: Channel-selection button, push the Up button( $\Delta$ ) one times, the channel number will be added one, push the Down button( $\nabla$ ) one times, the channel number will be decreased one.
- ⑧ USB: USB Interface
- ⑨ PWR: Power Socket

### III. How to Use the RF-RC Module

#### 1. How to change the working channel

You can press the UP button  $\Delta$  or the DOWN button  $\nabla$  to choose the work channel.

### IV. Technical Specifications

- Frequency range: 433.92 MHz
- Modulation mode: FSK
- Channels: 8
- Receiving sensitivity:  $\leq -113\text{dBm}$
- 1st IF: 10.7MHz
- 2<sup>nd</sup> IF: 455KHz
- Adjacent channel selectivity:  $\geq 65\text{dB}$
- Adjacent channel power:  $\geq 65\text{dB}$

Output Power:  $\leq 10\text{mW}$  (20mW)  
Frequency Stability:  $\pm 5\text{ppm}$   
Channel Spacing: 50KHz  
Frequency deviation:  $\leq 1\text{KHz}$   
Spurious rejections:  $\geq 60\text{dB}$   
Maximum current:  $\leq 82\text{mA}$   
Stand-by current:  $\leq 14\text{mA}$   
Antenna impedance:  $50\Omega$   
DC Voltage range:  $5.0 \pm 0.5\text{ V}$   
Ambient temperature:  $-20^\circ\text{C} \sim 55^\circ\text{C}$

#### V. Corresponding frequency of 1~8 channels

Channel No.	Frequency	Channel No.	Frequency
1	432.8000MHZ	2	432.9000MHZ
3	433.0000MHZ	4	433.1000MHZ
5	433.2000MHZ	6	433.3000MHZ
7	433.4000MHZ	8	433.5000MHZ